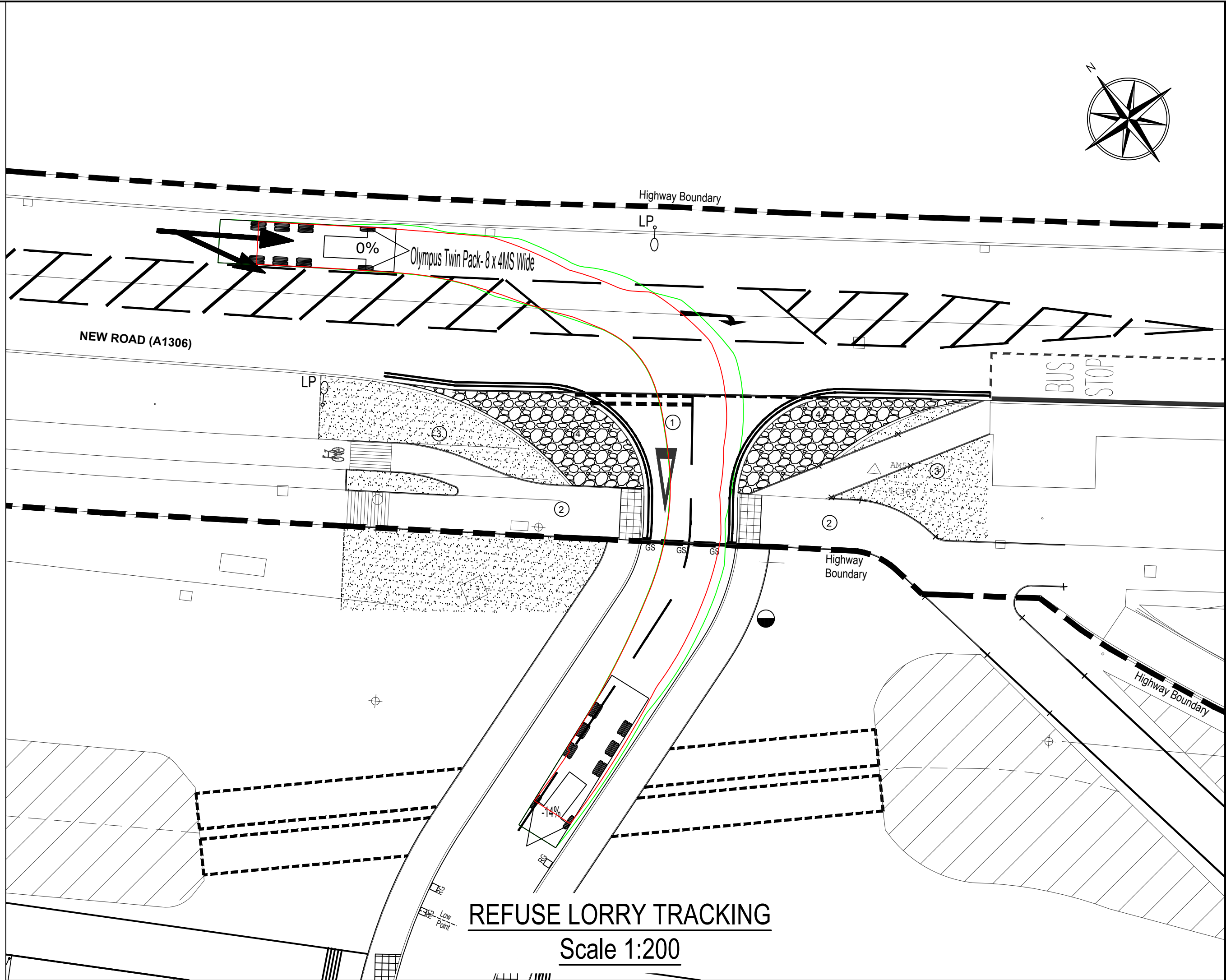
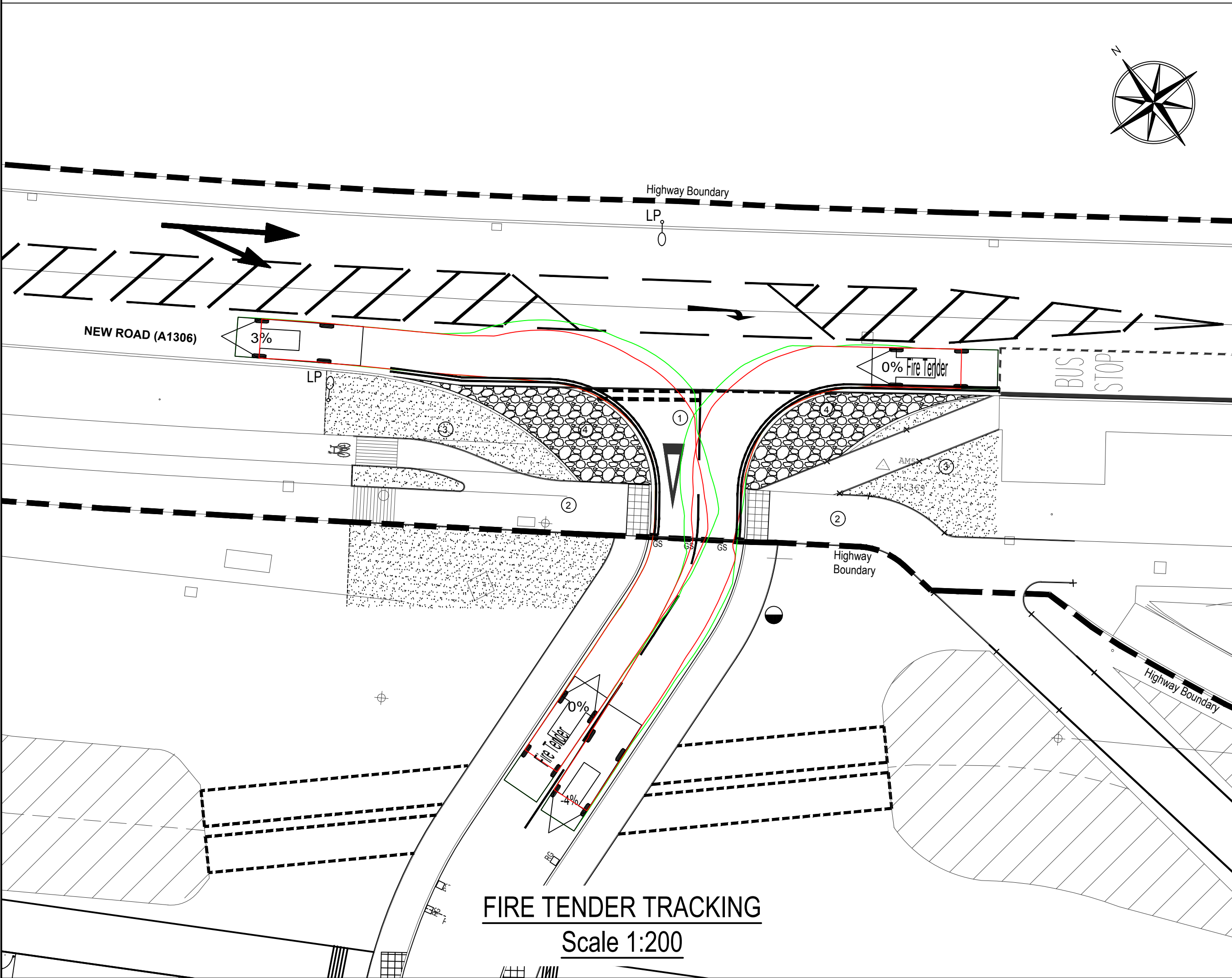


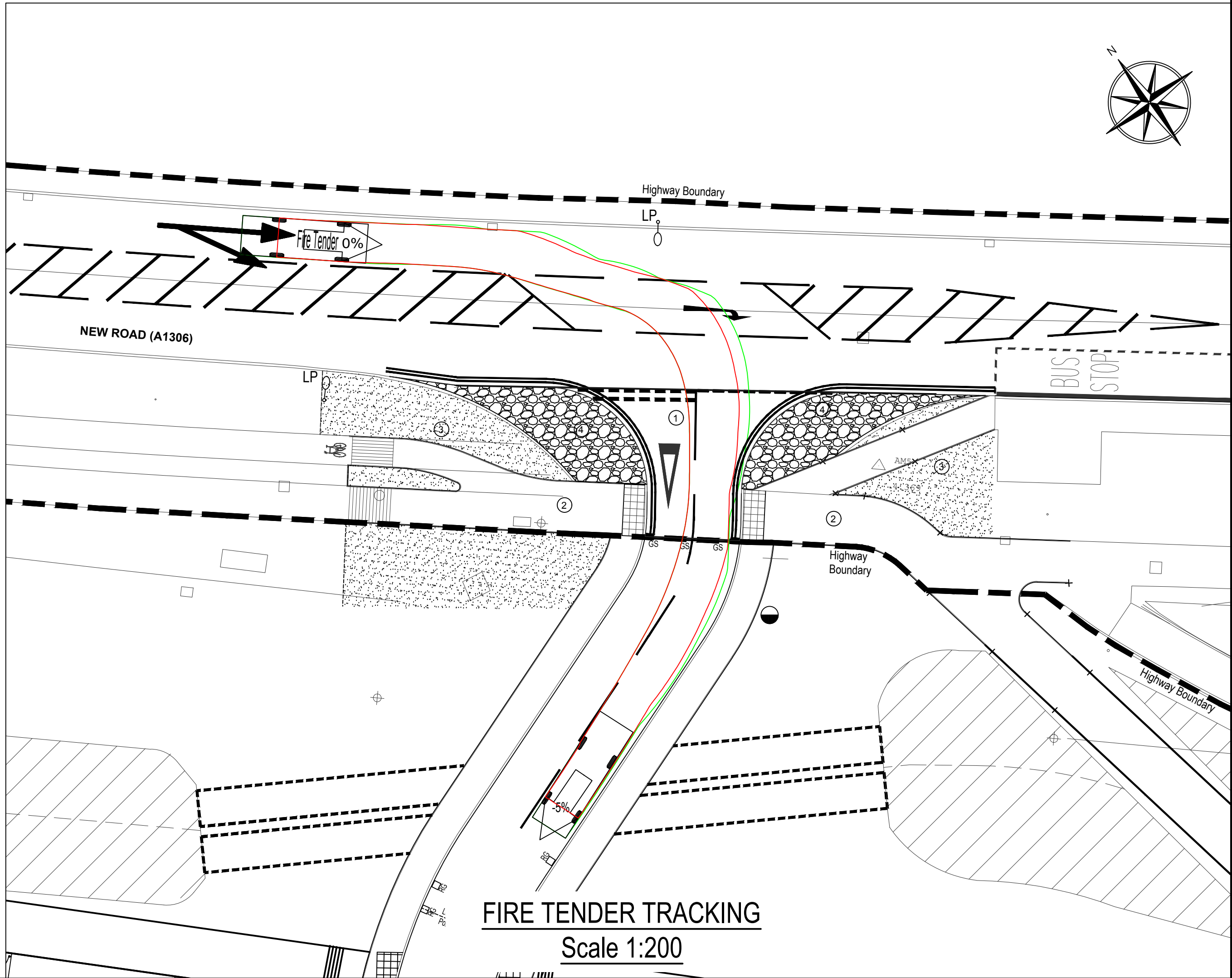
REFUSE LORRY TRACKING
Scale 1:200



REFUSE LORRY TRACKING
Scale 1:200



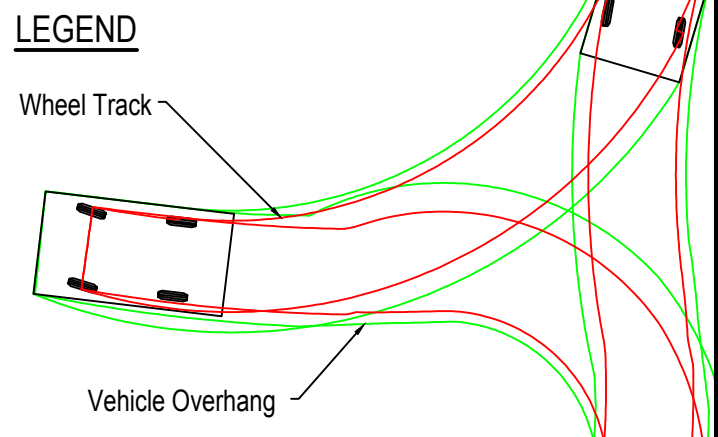
FIRE TENDER TRACKING
Scale 1:200



FIRE TENDER TRACKING
Scale 1:200

No Dimensions are to be scaled from this drawing.

- NOTES
1. All vehicle surfaces accessible by Fire & Refuse vehicles have been designed to withstand Vehicle loads in excess of 20 tonnes.
 2. All areas designed for access by Fire Vehicles are in excess of 3.7m width and have no height restrictions.



VEHICLE PROFILES

	7.334m
Fire Tender	Overall Length
	2.286m
	Overall Width
	3.495m
	Overall Body Height
	0.380m
	Min Body Ground Clearance
	2.286m
	Track Width
	4.00 sec
	Lock to Lock Time
	8.000m
	Kerb to Kerb Turning Radius

	10.325m
Olympus Twin Pack- 8 x 4MS Wide	Overall Length
	2.550m
	Overall Width
	3.890m
	Overall Body Height
	0.250m
	Min Body Ground Clearance
	2.500m
	Track Width
	4.00 sec
	Lock to Lock Time
	9.000m
	Kerb to Kerb Turning Radius

SUBJECT TO SECTION 278
APPROVAL BY LONDON
BOROUGH OF HAVERING

REVISIONS

T1	Tender Issue	21/09/16
T2	Refuse tracking using 'Olympus twin pack- 8 x 4 MS Wide' truck added, and Fire tender tracking revised to suit revised bellmouth revised radii of 6m as per LB of Havering comments. WDAL logo revised.	07/06/18
T3	Proposed private street lighting added. Proposed de-culvert poole sewer revised to suit approved environment agency's environmental permit.	07/06/19
T4	Drawing revised to suit latest S278 GA plan.	15/08/19
T5	Drawing revised to suit latest S278 GA plan.	20/09/19

WITHERS
DESIGN ASSOCIATES
CIVIL ENGINEERING & INFRASTRUCTURE DESIGN
Unit 12, Wakes Hall Business Centre
Wakes Colne, Colchester, Essex
CO6 2DY
01206 247081

PROJECT
**DOVERS CORNER
RAINHAM**

CLIENT

**PERSIMMON HOMES
(ESSEX) LTD**

DRAWING TITLE
**SECTION 278 ACCESS - REFUSE &
FIRE TENDER TRACKING**

SCALE	DATE	INIT	CHKD
AS SHOWN @ A1	08/16	cs	maw
STATUS			
TENDER			
DRG NO			REVISION
16-011/327			T5